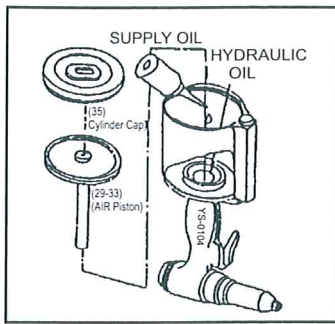
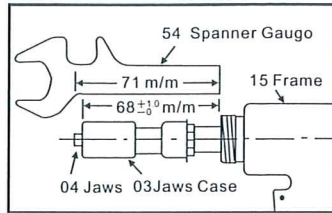


HEAVY DUTY 3/16" (4.8mm) AIR HYDRAULIC RIVETER

ENERGY SAVING TYPE ADDING OIL METHOD

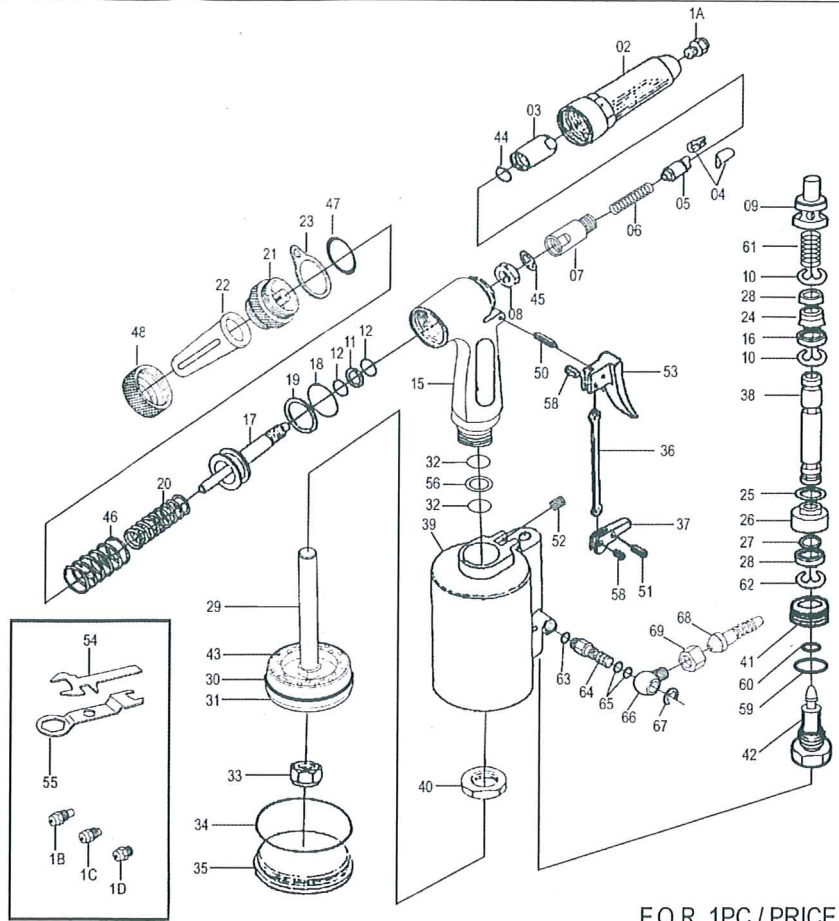


ADJUSTING LENGTH



SPECIFICATIONS

Traction Power: 1045 kg.f (2304 LBS.F)
 Stroke Length: 16mm (0.63")
 Air Hose Size: 3/8" I.D.
 Air Inlet: 1/4" PT(NPT)
 Net Weight: 1.48 kgs (3.26 LBS)
 Air Consumption: 1.5 Liter/Cycle
 Air Pressure: 78 -85 PSI (5.5~6.0 kg/cm²)
 For Steel Rivets: 2.4mm~4.8mm



F.O.R. 1PC / PRICE

No.	Parts Name	Q'ty	500150+	No.	Parts Name	Q'ty	500150+	No.	Parts Name	Q'ty	500150+
1A	Nose Piece 4.8m/m(3/16")	1	-1A	22	Safety Cap	1	-22	46	Return Spring (Outer)	1	-46
1B	Nose Piece 4.0m/m(5/32")	1	-1B	23	Hanger Clip	1	-23	47	Frame Cap Ring	1	-47
1C	Nose Piece 3.2m/m(1/8")	1	-1C	24	Air Valve Seal	1	-24	48	Safety Cap Nut	1	
1D	Nose Piece 2.4m/m(3/32")	1	-1D	25	O Ring	1	-25	50	Spring Pin	1	-50
02	Nose Housing 87L	1	-02	26	Valve Seat	1	-26	51	Level Pin	1	-51
2L	Long Nose Housing 160L	★		27	O Ring	1	-27	52	Lock Screw	1	-52
03	Jaws Case	1	-03	28	Valve Collar Washer	2	-28	53	Trigger (Long)	1	-53
04	Jaws (5 x 10)	2	-04	29	Air Piston Rod	1	-29	53A	Trigger (Short)	★	
05	Jaw Pusher	1	-05	30	O Ring	1	-30	54	Spanner Gauge 17, 15, 71	1	-54
06	Jaw Case spring	1	-06	31	Air Piston	1	-31	55	Spanner 24, 15, 10	1	-55
07	Jaw Case Back Part	1	-07	32	O Ring	2	-32	56	Back Up Ring	1	-56
7L	Long Jaw Case Back Part	★		33	Lock Nut	1	-33	58	Trigger Pin	2	-58
08	Jaw Case Lock Nut	1	-08	34	O Ring	1	-34	59	O Ring	1	-59
09	Valve Pusher	1	-09	35	Cylinder Cap	1		60	Seal	1	-60
10	E Ring	2	-10	36	Trigger Rod	1	-36	61	Pusher Spring	1	-61
11	Back Up Ring	1	-11	37	Trigger Lever	1	-37	62	E Ring	1	-62
12	O Ring	2	-12	38	Valve Tube	1	-38	63	Optional Accessories	★	
15	Frame	1		39	Air Cylinder	1		67		YS-0046	★
16	Collar for Valve Tube	1	-16	40	Frame Lock Nut	1	-40	68	AIR HOSE JOINT 5/16"	★	
17	Oil Piston	1	-17	41	Nipple Screw	1	-41	69	AIR HOSE JOINT NUT 1/4"	★	
18	O Ring	1	-18	42	End Plug	1	-42	70	OUTER THREAD JOINT PM20 B	★	
19	Back Up Ring	1	-19	43	Bumper	1	-43	71	INNER THREAD JOINT PF20-C	★	
20	Return Spring (Inner)	1	-20	44	Jaw Case O Ring	1	-44				
21	Frame Cap	1	-21	45	Lock Washer (Aw)	1	-45				

★ Optional Accessories: Universal Joint(360°); YS-0046 or YS-0046A, YS-0046B, YS-0046C.
 ※ PLEASE ALWAYS ENSURE THE PART No. 13 AIR BLOW PLUG TIGHT THREADED.